



23<sup>rd</sup> DECEMBER 1994

REF.

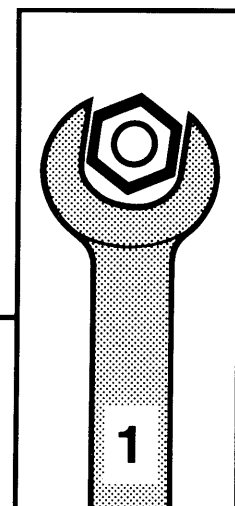
**1** N° XM 133-00/4

ABONNEMENT GME

# DK5 ENGINE

## ● ENGINE MOUNTING

MAN 058931



GB



**AUTOMOBILES CITROËN**  
DIRECTION COMMERCE EUROPE  
DOCUMENTATION APRÈS VENTE

## REMOVING – REFITTING : ENGINE MOUNTING ASSEMBLY

### 1 – RECOMMENDED TOOLS

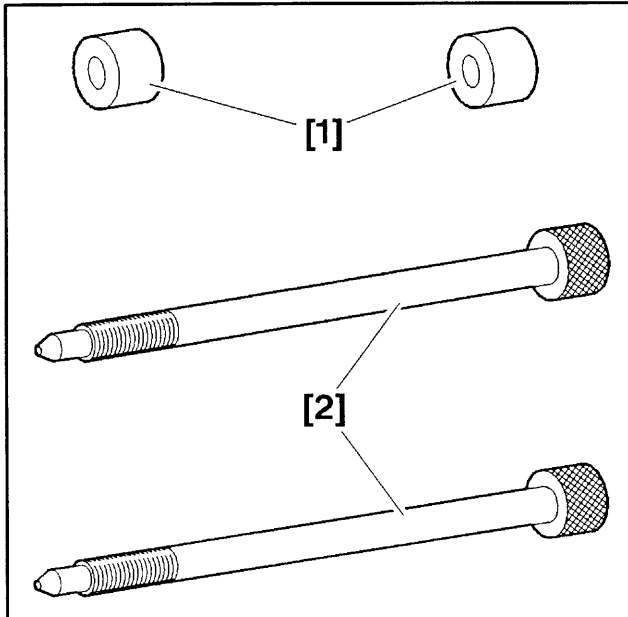


Fig : E5-P053C

[1] spacer 5714-TP1 (tool box 5711-T).

[2] setting rod 5714-TP2 (tool box 5711-T).

2 – IDENTIFICATION

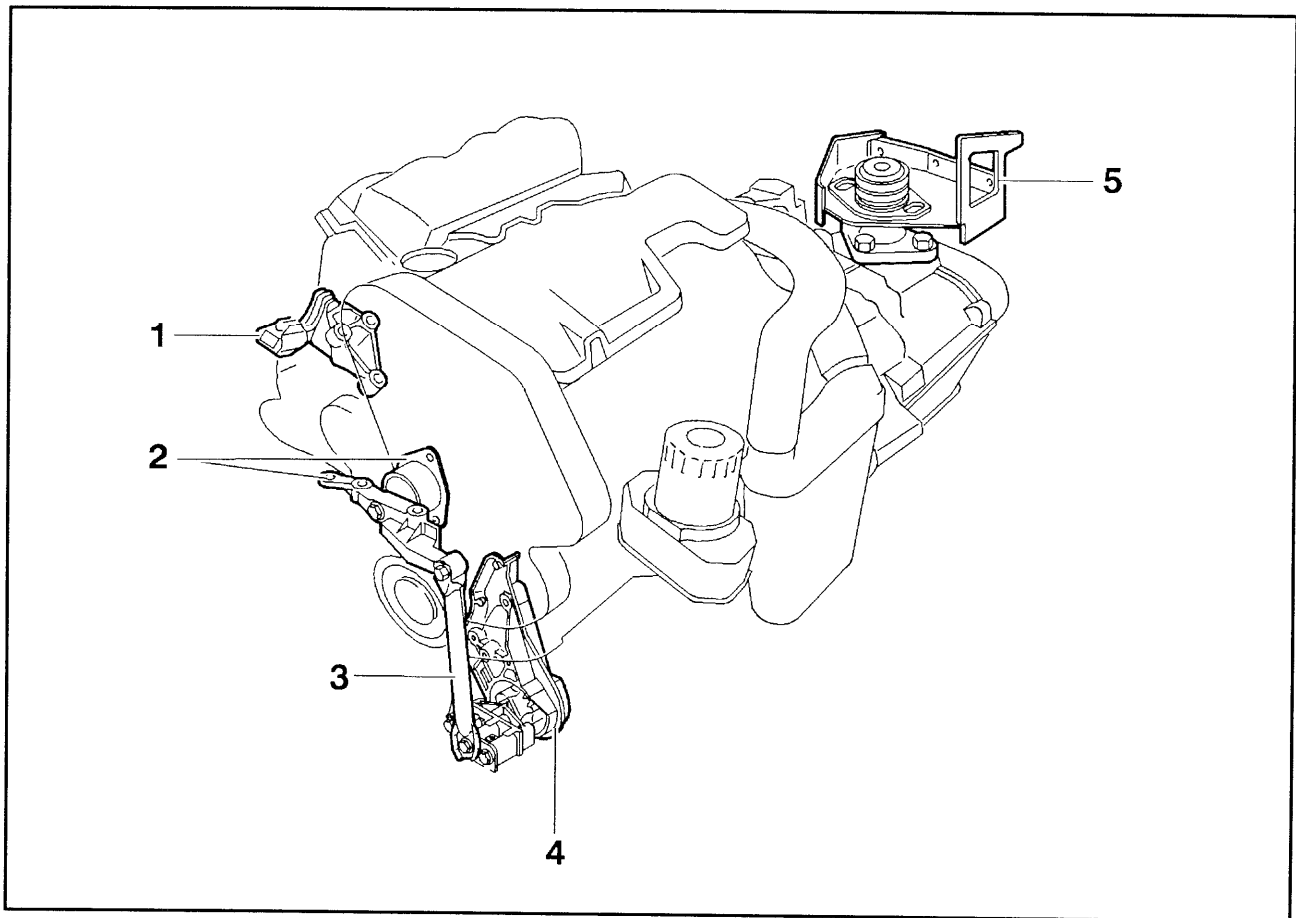


Fig : B1BP052D

- (1) – upper torque mechanism.
- (2) – engine mounting.
- (3) – torque rod.
- (4) – lower torque mechanism.
- (5) – gearbox mounting.

## 3 - REMOVAL

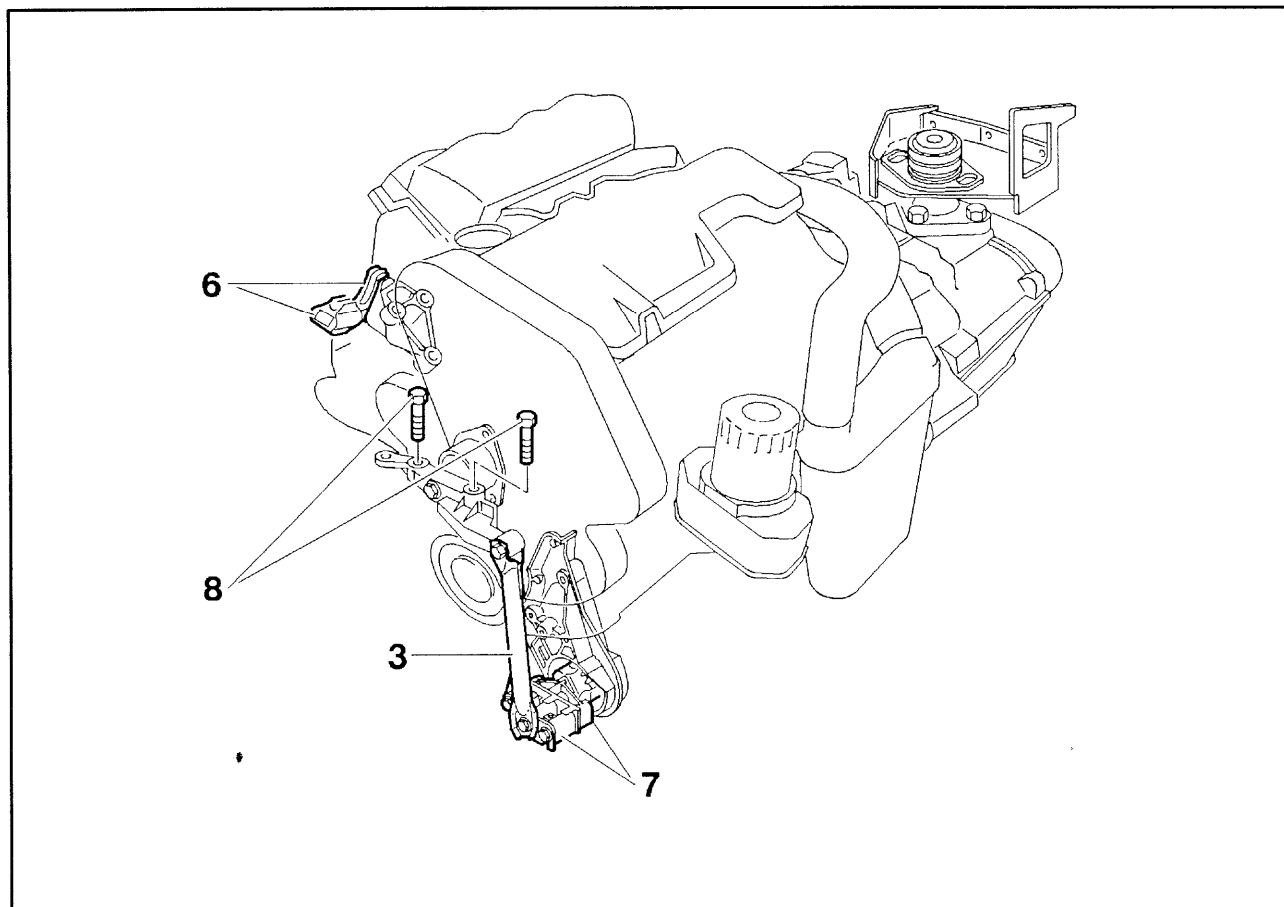


Fig : B1BP060D

Remove :

- upper torque mechanism flexible retainer shaft (6)
- torque rod (3)
- lower torque mechanism flexible retainer shaft (7)

Position a workshop crane.

Support the engine.

Take off screws (8).

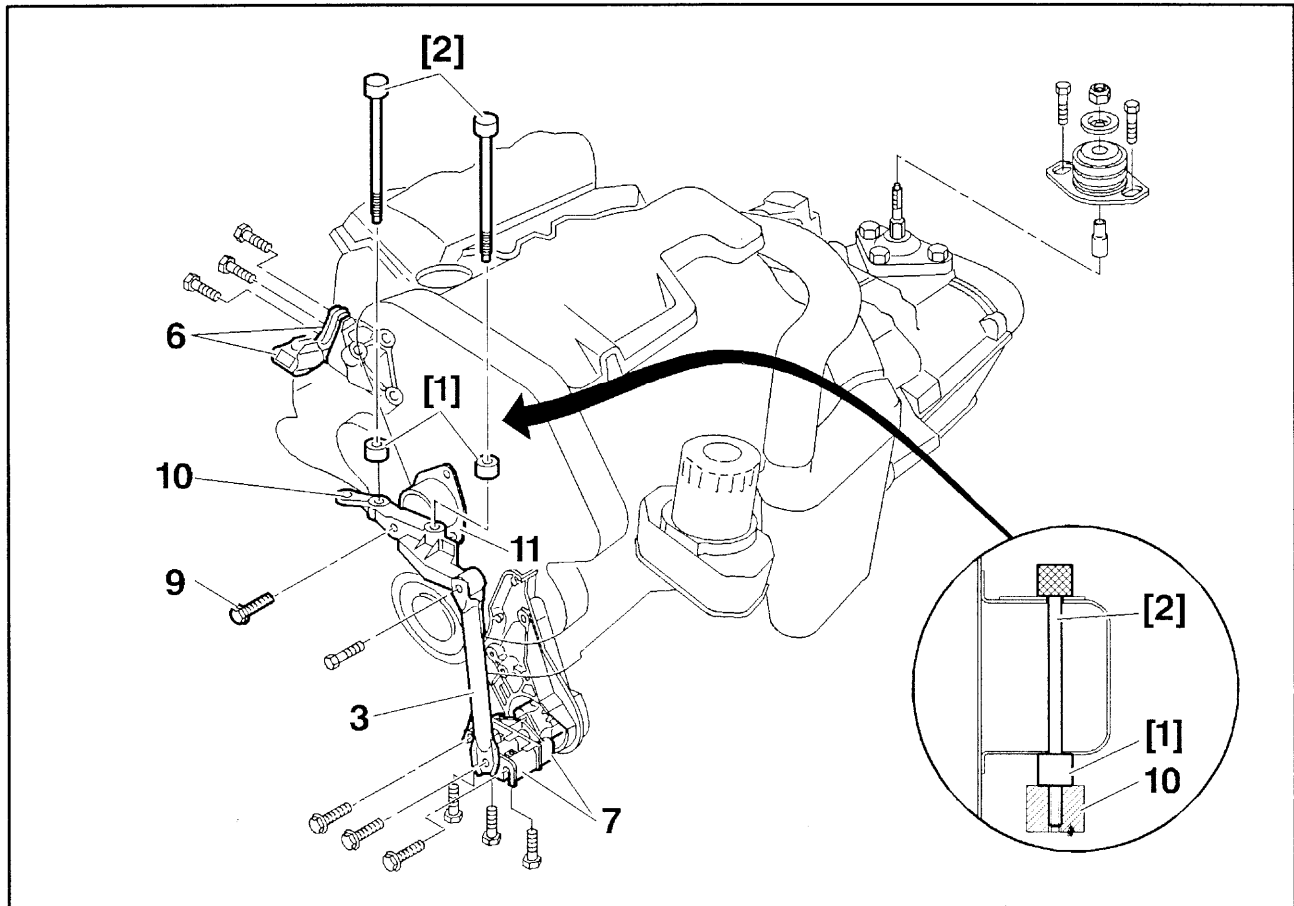


Fig : B1BP061D

Slightly lower the engine.

Fit tools [1] and [2].

Remove :

- screw (9)
- tools [1] and [2]
- engine support base (10)

Fit :

- torque rod (3)
- lower torque mechanism flexible retainer shaft (7)
- upper torque mechanism flexible retainer shaft (6)
- the front exhaust pipe

#### 4 – REFITTING

Prior condition : uncouple the front exhaust pipe.

Refit engine support base (10) to support (11).

Fit screw (9) without tightening.

Fit tools [1] and [2].

Tighten screw (9).

Remove tools [1] and [2].

Slightly lift the engine.

Reinstall screws (8).

Withdraw the workshop crane.

**ATTENTION** : Before reassembling the torque mechanisms, the power unit must be suspended by means of brackets (2) and (5) and kept free from stress.

5 – TIGHTENING TORQUES

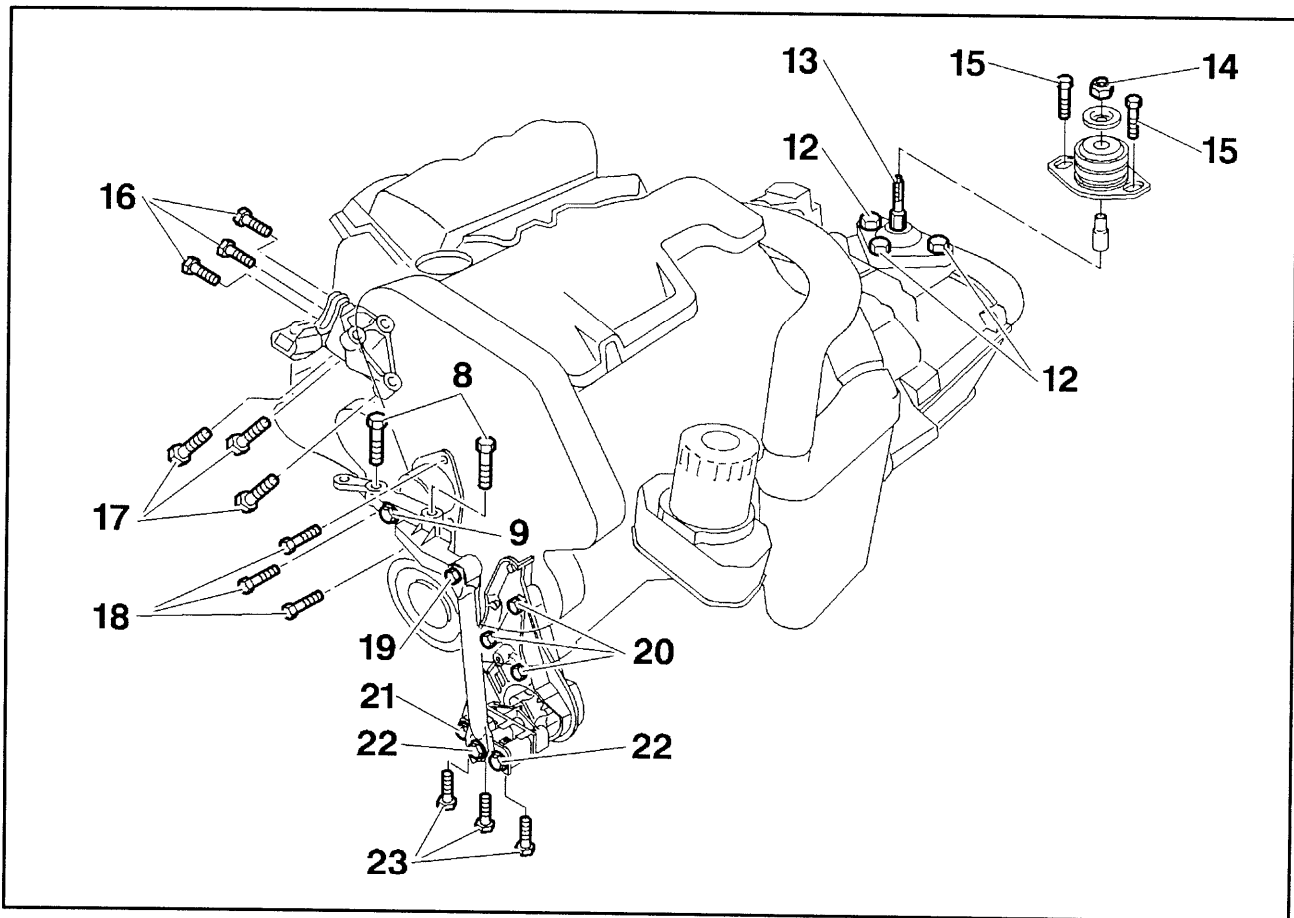


Fig : B1BP062D

Tightening torques :

- screws (8) : 5 m.daN
- screw (9) : 9 m.daN
- screws (12) : 5 m.daN
- the stud (13) : 5 m.daN
- nut (14) : 6.5 m.daN
- screws (15) : 2 m.daN
- screws (16) : 5 m.daN
- screws (17) : 5.5 m.daN
- screws (18) : 3 m.daN
- screw (19) : 11 m.daN
- screws (20) : 5.5 m.daN
- screw (21) : 6 m.daN
- screws (22) : 11 m.daN
- screws (23) : 5 m.daN